

# Naagzowaamijigan owi Kitchi Kiing Ogimaakeng



**X**  
*C'est notre vote*

Zhaan elections.ca owi inaakinigaadeg gikendamowin owi beshaakbiigeng miinwaa  
mina bimaadiziwin miinwaa waankiiwin etegin.

1-800-463-6868 / elections.ca / TTY 1-800-361-8935

# Gdo mina bimaadiziwin miinwaa waankiiwin aawan

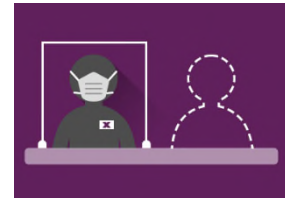
Odi waanji bezhaakbiigeng, enkiitaagejig ada biiskaanaa-aan gabiingwebchiganan.  
Miinwaa age ada tenoon:



Ninjiin enji biinchigaadeg



Weweni beshaa bwaa  
yaang gikinawaajichiganan



Bezhiig goweta enkiitaaged  
ensa bezhiig ozhibii'ige  
doopiwin shkwe-aang  
zhaabwaasewaag  
gibaakogan

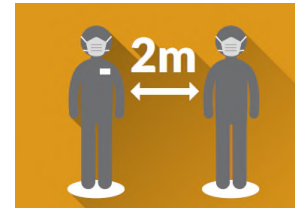
Apii zhaawin awii bezhaakbiigewin, gegwa nendage:



Biiskan gibiingwepchigan



Aga miingo ngoding goweta  
enkaazang zhibiiginaatik  
awii maakibiiman gdo  
beshakbiigan mazinigan,  
maage gdaa biidoon giin  
debindaman  
atisiganibii' iged-ozhibii' igan  
maage zhibiiginaatik



Zhichigen  
nendowendaagwog beshaa  
awii bwaa yaang gnigen  
agwa nigodwaasi dibagan  
minik yaang ngoji  
gewaanin abi  
beshakbiigejig miinwaa  
beshakbiigeng  
enkiitamajig.

Giishpin agii debwemigag agii ndakenimigowin maage yaaman inamjiwinan owi COVID-19,  
maage giishpin agii wiiiji yaawin gwaya eyaang aakoziwin-manijoozhens, zhaan elections.ca awii  
gagwedwewin awii zhitowin beshakbiigewin niindaawewen mazinigan epanjibideg.

Maanda mazinigaans giizhisin nowonj donaa inewinan odi **elections.ca**.

Newen bkaan dnowaa beshakbiigewinan, dibishko gonaa ombisin zhibiiganan, maangibiigaadeg  
miinwaa DAISY, abii giigidan odi **1-800-463-6868** maage **1-800-361-8935 (TTY)**.

# Gagwekwendan agii boozibiigewin awii debinad

Carte d'information de l'électeur	Voter Information Card	Elections Canada		POSTES CANADA / CANADA POST
<b>Élection fédérale</b>	<b>Federal Election</b>	<b>Nom ou adresse incorrects? / Vérifiez votre inscription à elections.ca.</b>		3122778
<b>Pour voter, vous devez :</b> <ul style="list-style-type: none"><li>• être citoyen canadien</li><li>• avoir au moins 18 ans le jour de l'élection</li><li>• prouver votre identité et votre adresse</li></ul> <p>Visitez <b>elections.ca</b> pour connaître les pièces d'identité acceptées.</p> <p>Apportez cette carte et vos pièces d'identité pour faciliter le vote.</p>	<b>To vote, you must:</b> <ul style="list-style-type: none"><li>• be a Canadian citizen</li><li>• be at least 18 years old on election day</li><li>• prove your identity and address</li></ul> <p>Visit <b>elections.ca</b> to know what ID is accepted.</p> <p>Bring this card with you, along with ID, to make the voting process easier.</p>	<b>À l'électeur :</b> DOE, JOHN 123, RUE MAIN ANYTOWN ON K1A5T7		
<b>elections.ca</b>		<b>To the Elector :</b> DOE, JOHN 123 MAIN STREET ANYTOWN ON K1A5T7		3903 000 0 98

**Giishpin agii bozibiigaaziin**, gdaa debinaa beshakbiigewin gikendamowin mazinigaans odi mazinigan e-pangijibideg shkwaa waawinjigaadeg gimaake giizhigag. Aga wiindamaagon waanji miinwaa apii owaa beshakbiigewin. Biish owa mazinigaans, miinwaa gdo debwe aawiyin mazinigaansan, woshme awii wenpanag owi beshakbiigewin.

**Giishpin bwaa debnad mazinigaans maage maazhii-iimgag gikendamowin**, gnimaa gaawii gdaa bozibiigaazisii maage gdo beshakbiigewin gikendamowin yaawiyin gnimaa adaa getewiiwan Gnowaabmdan **elections.ca** awii bozigebiigewin maage oshki biiman gindaasowin endaawin, maage abi giigidan odi **1-800-463-6868** maage **1-800-361-8935 (TTY)** awii gagwedwewin naadmaagewin. Gdaa bosibiige maage oshki bii-aan gdo beshakbiigewin gikendamowin yaawiyin aapii beshakbiigewin.

## Awii bozibiigewin miinwaa beshagbiigewin kitchi kiing ogimaakeng, aabdeg gwii:

- Gwii'aaw Genadaa debendaagozid
- Midaasiwi shi niishwaasiwi agwii piitis apii gimaake giizhigag
- Waamdowewin yaawiyin miinwaa endaawin

# Nikiyaa ezhi beshaakbiigeng

**Gdaa beshaagbiige maanji agwa pii epiichi temgag owi ogimaakeng.**

Wenaamdan owi nikiyaa waazhi beshaagbiigewin memaanji minwaabmdaman.

## 1 Owi apii giizhigag ogimaakeng

Gdo waawinjigaade awaa nji beshaakbiigewin ada nsaaksin midaaswi shi niisho dibagiisiwan (dibi-igan nowonj aawinon kiinsing).

Ndagikendan gdo **beshaakbiigewin gikendamowin mazinigaans** owi waanji miinwaa owi apii age beshaakbiigewin.

## 2 Giizhaa beshaagbiige giizhigadon

Gdo waawinjigaade awaa nji beshaagbiigewin ada nisaaksin zhaangaso dibaganeg gishep apiinish zhaangaso dibaganeg naagshig, Jiibaato giizhigag, Maanii giizhigag, Name Giizhigag miinwaa Shkwaa Name Giizhigag ningo namegiizhigag jibwaa aawang Ogimaake giizhigag.

## 3 Maziniginan e-pangajibideg

Gagwedwen jibwaa Niish Giishgag jibwaa ogimaake giizhigag jibwaa ngodwaaso dibagineg shkwaa naakweg. Agaa beshaakbiige nikaazyin owi e'bezhigong beshaakbiigewin mazinigan zhichigewin. Gagwekwendan awii debinamaang gdo mooshkinebiigaadeg beshaakbiigewin **apii aawong gimaake giizhigag**, gaawii giishpin ada gindesino. Gnowaabmdan **elections.ca** woshme gikendamowin newen ekwaasemigag miinwaa awii waabmdaman endagwen beshaakbiigewin niindaawewin aawang giin gagwek aawong e'wenaamdaman.

## 4 Dibi gwa iidik Ogimaake Genadaa nakiigamig kina zhinda Genadaa

Dibi gwa iidik gdaa zhaa Ogimaake Gaanada nakiigamig kina maampii Gaanada jibwaa Niish Giishigag jibwaa ogimaake giizhigag jibwaa ngodwaaso dibaagineg shkwaa naakweg. Agaa beshaakbiigewin nikaazyin owi e'bezhigong beshaakbiigewin mazinigan zhichigewin. Shkwaa waawinjigaadeg ogimaakeng, gnowaabmdan **elections.ca** maage abi giigidan awii mikaman owi Ogimaake Gaanada nakiigamig memaanji besha etemgag yaawin.

Apii agii shkwaa gagwedwewin awii beshaakbiigewin nikaazyin maziniginan e-pangajibideg maage odi Ogimaake Gaanada nakii gamig, amii **goweta** owi nikiyaa age beshaakbiigemiba maanda gimaakeng.

# Ayaan gdo debwewin yaawiyin mazinigan awii

Nisiwi gdaa aanan wenaamjiganan awii waabmdowewin yaawiyin miinwaa endaawin.

Awii beshaakbiigewin, aabdeg gwii'aaw Gaanada debendaagozid miinwaa midaasiwi shi niishwaasiwi agwii piitis apii ogimaake giizhigag.

## Wenaamjigan 1



### Waabmdowen bezhig ninda e'waabmdowemgag yaawiyin

- Gdo bamibzochige mazinigan
- Bkaan dnowaa mazinigan maagwed Genadaa gimaa gamig (kitchi kiing, kiinsing/waasawekamig maage endanakiwin) gamizinaazgan, gdo inoziwin miinwaa megwa endaawin temgag

**maage**

## Wenaamjigan 2



+



### Waabmdowen niish maziniginan yaawiyin

Neniish agwa aabdek gdo inoziwin miinwaa gnigen agwa bezhig ada zhibiigaade megwaa endaawin.

#### Dibishko gonaa:

- beshaagbiige gikendamowin mazinigaans miinwaa zhoonyaa gamig zhibiigan
- aabijichigewin mazinige mazinigaans miinwaa e'skoonwid aawid mazinigaans

### Gaawiiin gda aanziinan ninda? Gaawii agwa gego!

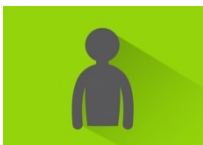
Tenon aanin bkaan e'daapinigaadegin maziniganan owi debwemigag yaawiyin. Ndakendan owi kina e'zhibiigaadeg odi [elections.ca](http://elections.ca)

**maage**

## Wenaamjigan 3



+



### Giishpin bwaa yaaman YAAWIYIN mazinigan

Gdaa beshaagbiige agwa giishpin dibaajimawin yaawiyin miinwaa endaawin zhibiigewin miinwaa gwaya enkiid enji bezhaagbiigeng awii debwechiged ayaawiyin.

Owa e'debwechiged aabdeg ada debwe yaawid miinwaa endaad. Owa bemaadzid bezhig goweta adaa debwechige bezhig yaawid bemaadzid (gaawii wiigwa gnesh gnowenjige gamgon dagosizino).

# Beshaakbiigeng naadmaage nikaaziwinan



**Kina e'bezhaakbiigejig nagmigaazwog waanji bezhaakbiigeng apii ogimaakeng miinwaa giizhaa beshaakbiigeng giishigadon.** Shkwaa waawinjigaadeg ogimaakeng, gagwekwendan agaa nagmigowin awii onji beshaakbiigewin aawan age nakwezhkang gashkiweziwin meneziiyin maanda nikiiyaa: Nda'gikendan epiichi nishing gashkiweziwin meneziiyin yaawong:

- Ndakendan gdo beshaagbiigewin gikenjige mazinigaans
- Zhaan **elections.ca** miinwaa zhibii-an gdo odena gindaasiwin zhiwe Beshaakbiiged Gikenjigewin Nankiiwin makakoons, maage
- Abi giigidan odi **1-800-463-6868** maage **1-800-361-8935 (TTY)**.

Giishpin znagendamowin yaaman owi gashkiweziwin agaa nagmigaadeg waanji beshaakbiigewin, abi ginoshinaang odi **1-800-463-6868** maage **1-800-361-8935 (TTY)**.

Awii gagwedwewin beshaakbiigewin naadmaagewin giizhaa, e'dagosin iniwewin miinwaa mazinigeng dibaajimowin aankanosijigen, giigidan Ogimaake Gaanada nakii gamig odi endanakiwin jibwaa Niish Giizhigag jibwaa ogimaake giizhigag jibwaa ngodwaaso dibagneg shkwaanaakwek.

## Beshaagbiigeng naadmaage nikaaziwinan miinwaa nankiiwin ogimaake giizhigag



**Woshme mechaag beshaagbiigewin mazinigan temgag e'taagejig zhibiigaazwaad Magibiigaadeg**



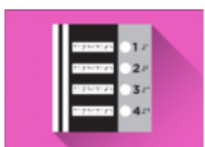
**Iniwewin miinwaa mazinigeng dibaajimowin aankanosijigen (miinwaa aanin bkaan naadmaagewin apii giizhaa gagwedweng)**



**Magibiigan Miinwaa ombisin zhibiiganan Gewe e'taagejig**



**Beshaakbiigewin naadmaadwin gdo beshaakbiigewin mazinigan (gwaya gdaa biinaa gekenimad awii naadmaage maage gagwejim ogimaakeng enkiitaaged)**



**Daanginigaadeg miinwaa ombisin zhibiigan beshaakbiigeng gikinwaabmijigan**



**Gichi-majignigan zhibiiginaatig (bangii tenon) Gdaa biidoon giin debindaman atisiganibii` iged-ozhibii` igan maage zhibiiginaatik**



**Maanginigesijiganan (4x)**



**Gdo inooziwin zhibiiman gikinwaabmijigewin**

**Akinwaadendan:** Ombisin zhibiiganan gewe e'taagejig goweta tenoon gimaake giizhigag. Maangibiigan temgad giizha beshaakbiigeng giizhigag miinwaa gimaake giizhigag.