

Ozhibii'igaazowizhichigewinan



X
It's Our Vote

Weweni gakina ji-mino-ayaayang

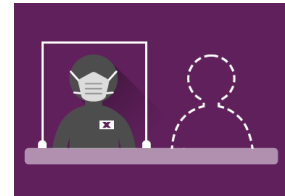
Ge-dazhi-biinjiibii'igeyan, oga-biisikaanaawaan gibodoonepizonan Daa-ayaawan:



Ge-dazhi-biintooyan
gininjiin



Ayaa apii ge-niibawiyeg

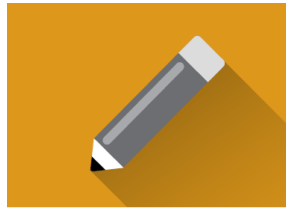


Da-bezhigo eta go
ge-anokaadang
biinjiibii'igewin

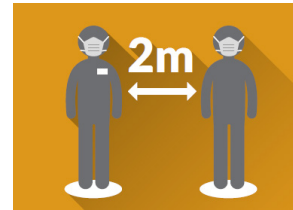
Apii ando-biinjiibii'igeyan gego waniigeken:



Naabishkan
gibodoonepizon



Giga-wii'igoo
ozhibii'iganaak gemaa gaye
giin giga-biinaa



Minjimendan apii
ge-izhi-niibawiyen
izhi-ningodwaasomizid

Giishpin gigishkaagoyan AAKOZIWIN-19 gemaa giishpin awiya giishpeshwanji'ad, daanginan owe elections.ca giishpin wii-izhichigeyan wii-izhinizha'aman ji-biinjiibii'igewin.

Ayaawan ogo onowe ezhi-bibakaanakin inwewinan iwedi elections.ca
Iniwe aanind ando-jiinigewinan, aanind mamaangibii'igaadewan gaye GE-ONJI-NOONDAMAN ,
gidaa-bi-ganoozhinaam omaa **1-800-463-6868** gemaa **1-800-361-8935 (TTY)**.

Gego waniigeken ji-biinjibii'igeyan gii-tebiniman

| Voter Information Card | Carte d'information de l'électeur | Elections Canada | | CANADA POSTES POST CANADA 312278 |
|--|--|--|--|--|
| Federal Election | Élection fédérale | Incorrect name or address? / Nom ou adresse incorrects? Check your registration at elections.ca. / Vérifiez votre inscription à elections.ca. | | |
| To vote, you must: <ul style="list-style-type: none">- be a Canadian citizen- be at least 18 years old on election day- prove your identity and address <p>Visit elections.ca to know what ID is accepted.</p> <p>Bring this card with you, along with ID, to make the voting process easier.</p> | Pour voter, vous devez : <ul style="list-style-type: none">- être citoyen canadien- avoir au moins 18 ans le jour de l'élection- prouver votre identité et votre adresse <p>Visitez elections.ca pour connaître les pièces d'identité acceptées.</p> <p>Apportez cette carte et vos pièces d'identité pour faciliter le vote.</p> | To the Elector : DOE, JOHN 123 MAIN STREET ANYTOWN ON K1A 5T7 | À l'électeur : DOE, JOHN 123, RUE MAIN ANYTOWN ON K1A 5T7 | |
| elections.ca | | | | 35012 093-D 96 |

Giishpin aazha gii-ozhibii'igaazoyan giga-odisigon ozhibii'igan gii-ishkwaa-biinjibii'igeng. Giga-wiindamagon apii ge-ando-biinjibii'igeyan. Bimaajidoon gaa-gii-odizigooyan MAZINA'IGAANS, gaye ozhibii'igan ayaawiyen, nawaj dawendad.

Giishpin odosigosiwan mazina'igaans gemaa gaye waniibii'igaadeg, maagizhaa gaawiin gigii-ozhibii'igaazosii maagizhaa gaawiin o'apii. Inaabin imaa **elections.ca** ji-biindigebii'igooyan gemaa ji-gikendamowaad ezhi-odisigooyan gidoozhibii'amaagoowin, gemaa gaye ganoozhinaam **1-800-463-6868** gemaa **1-800-361-8935 (TTY)** ji-wiiji'igooyan. Gemaa gaye wii-ozhibii'odizoyan biinjibii'igeyan.

Giishpin gegiin wii-biinjibii'igeyan:

- onjida go ji-zhaaganaashiwiyan
- maagizhaa ashi-nishwaaswo biboonweyan wii-biinjibii'igeyan
- ge-gikendamowaad ayaawiyen endaayan gaye.

Ge-izhichigeyang

Amanj igo apii gidaa-biinjbii'igewinakamigak.
Giin igo enendaman inake waa-izhibii'igeyan.

1 Biinjbii'igewigiizhigak

Giga-waabandaan ozhibii'igaadeg ge-dazhi-biinjbii'igen ashi-niizho-diba'igan da-baakisin (maagizhaa giin bakaan daso-diba'iganeyaadog).

Gidaa-naanaagadawaabandaan **ezhi-biinjbii'igeyan.**

2 Giishpin gashkitoosiwan ji-bi-izhaayan ayaa go niigaan ji-biinjbii'igeyan

Ningo-anama'e giizhig niigaan dabaakisinoon zhaangaswi biinish zhaangaswi dibikak, naano-giizhigak biinish ishkwa-anama'e giizhigak ge-izhi-biinjbii'igeyan niigaan.

3 Giishpin ozhibii'igeyan aabajitooyan

Niigaan niizho-giizhigak giga-dibaadondis apii ningodwaaso-diba'iganeyaak. Aabajitooyan bakaan biinjbii'igewin. Onjida go akawe ji-debiniman gimazina'igaans **jibwaa-biinjbii'igewigiizhigak**, maagizhaa gaawiin dayaabadasinoon. Inaabin imaa biinjbii'igewining **elections.ca** ji-gwayakochigeyan ji-waabandaman apii eshkwaaseg weweni ji-gikendaman.

4 Dibi go endanakamigak Zhaaganaashiiwibii'igeng

Izhaa biinjbii'igewigamig niizho-giizhigak jibwaa-biinjbii'igewigiizhigak ningodwaaswi diba'iganeyaak. Gidaabajitoon bakaan biinjbii'igemazina'iganens. Gii-ishkwa-biinjbii'igewinakamigak, inaabin **elections.ca** maagizhaa gaye gidaa-bi-ganoozhinaam.

Mii **eta go** inake ge-izhichigeyan izhinizha'aman gibiinjbii'igewin.

Bimiwidoon ji-gikendaagoziyan ayaawiyan

Niswewaanagad ge-onji-nisidowinaagooyan.

Onjida go ji-zhaaganaashiiwiyan maagizhaa ashi-nishwaaswo biboonweyan wii-biinjbii'igeyan

Owe bezhig



Bezhig naagotoon ayaawiyan

- Gibimibizomazina'igan
- Gidaakoziwimazina'igan, miinawaa anishinaabe diba'amaadii mazina'igan

gema

Miinawaa owe niizh



Niizh geyaabi naagotoon ayaawiyan

Endazhi-anokiiyan mazina'igan ji-ozhibii'igaade endaayan gaye giwiinzowin.

Maagizhaa owe:

- biinjibii'igemazina'igaans gaye endazhi-ganawenimad gizhooniyaa zhooniyaaawigamigong
- Ezhi-dibaa'aman giwaasakonejiganan gaye oshkinawe mazina'igaans

Gidayaana na onowe? Gego biimendangen!

Aanind geyaabi ayaawan geyaabadakiban. Weweni ganawaabandan ozhibii'iganan iwedi elections.ca

gema

Miinawaa owe niswi



Giishpin ayaasiwan onowe mazina'igaansan

Gidaa-biinjbii'ige gegoo dibaajimoyan gidoozhibii'iganing ayaawiyan gidaa-wijii'waa gaa-gikenimig ayaawiyan ando-biinjbii'igeyan.

+



Onjida go gewiin ji-dibaajimod ayaawid gaye endaad. Bezhig eta awiya odaa-wijii'aan (giishpin dash wiin ayi-endaad gikaawigamigong).

Biinjibii'ige aabajichiganan gaye wiijitwaawinan



Giizhaa wiiba da-naagwadoon ge-dazhi-biinjibii'igeng. Dibaajimong apii waa-piinjibii'igeng, weweni gikendan ji-gashki'oyan wii-izhaayan. Ji-gikendaman weweni ji-gashki'oyan:

- Ganawaabandan biinjibii'igemazina'igaans
- inaabin imaa biinjibii'igewining **elections.ca** gidoozhibii'amaagoo gakinawaajibii'iganan biinjibii'igemagak go
- gidaa-bi-ganoozhinaam **1-800-463-6868** gemaa **1-800-361-8935 (TTY)**

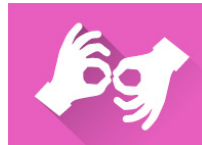
Giishpin gikendanzian ezhinaagwak wenji-biindigeng gidaa-ganoozhinaam **1-800-463-6868** gemaa **1-800-361-8935 (TTY)**.

Giishpin wii-gagdweyan ge-izhi-wiiji'igooyan, maagizhaa gaye inwewinan inaatewiwinan, gidaa-ganoonaa debendang biinjibii'igewin ako-niizhogiizhigak jibwaa-ningodwaaso-diba'iganenyaag.

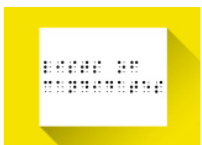
Biinjibii'ige aabajichiganan biinjibii'igewigiizhigak



Giga-waabandaan **mazina'igan mamaangibii'igaadeg** ji-gikendaman ayaawiwaad.



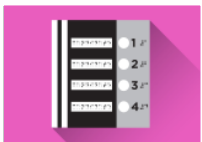
Inwewinan gaye inaatewiwinan (giishpin geyaabi gegoo wii-wiiji'igoziyan **giishpin niigaan gagwedweyan**)



Mamaangibii'igaadew an gaye ando-jiinigewinan waa-ozhibiiwandwaa



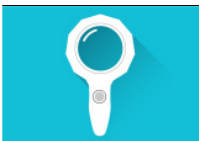
Giishpin andawendaman ji-wiiji'igooyan wii-ozhibii'aman (Awiya gidaa-wiizhaamaa gekenimad gemaa gaye gaa-anokiitang)



Naanaagadajii'igemazina'igan



Oga-ayaawaawaa' mengibii'igeseg ozhibii'iganaak (bangii minik) Gemaa gaye giin igo bezhig gidaabiinaa



Wenji-manginaagwak gegoo (niwin apiichimanginaagwa)



Ge-izhi-daangibii'igeyan

Ozhibii'iganan: Ando-jiinigewin omaa eta go apii aabadadoon biinjibii'igewigiizhigad. Mamaangibii'igan ayaawan jibwaa-biinjibii'igewigiizhigak.