

Gichûthe hûgabi hûga aktagabikte ne dokedukte ze owabi ze



X
C'est notre vote

Dââ yaû ze nâgu dokeyes yaû ze otâga îyawabich

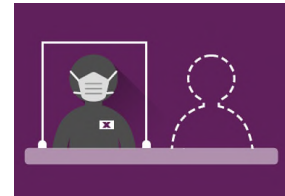
Ekta chazé wîchayagorhehikte zen, zen piîchiyabi ze îdohnâge agarhpe cha otûbikte chach. Zehâ necha îs yukâktach:



En nâbe hnuzazabi zen woyathâ ne kte chiyage cha yukâkte chach



Îchitehân ûm eye owabi îs hûyagabi chiyaga en hâhâkte chach

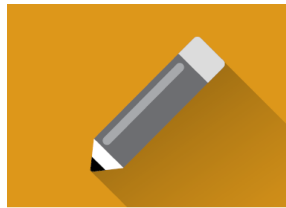


Chazé wîcha yagarhokte chas zen piîchiye ze wazi thudzân cha îhnuptâ îge cha onîgiyakte chach

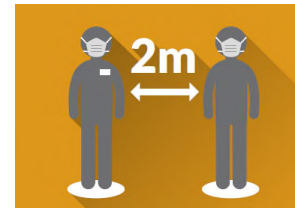
Chazé wîcha yagarhokte chas, yagithiyabisîk:



Îdohnâge agarhpe cha otûm



Ûth owabin onîkubi heceduc chazé cha yagarho chiyaga. Ze'esîkte chas niyenârh ùth owabin cha yahnohinu heceduc



Îchitehân ûm eyabi ne opam. Wîcha thiha sakpe yawabi ehâga gichigiyukâm.

Covid-19 ne oyaginî he chas, nâgu yahâbi yahne ze nuhe chas, ze'esî chas duwerh woyathâ ze yuhe cha kiyân ina hes, elections.ca zen yabi hûnâ owabi îmâkta hnikiyabi ne ohnâ chazé wîchayagarho chiyaga chazé gihnâgam.

Owabi ne oyade toka îabi enîs yûkach **elections.ca** zen ayakidabi chas.

Wîchasta îsta wathtebisî he cha nâgu huyagabisî ne cha 1-800-463-6868 zedusî chas **1-800-361-8935 (TTY)** ze thuda yekiyabi yeyabis owîchagiyabiktach. Wadaguyabi hes owîchagiyam ze.

Îchîktarh chazé yagihnâga chach Voter Information card ze

Carte d'information de l'électeur / **Voter Information Card**

Élection fédérale / **Federal Election**

Pour voter, vous devez :

- être citoyen canadien
- avoir au moins 18 ans le jour de l'élection
- prouver votre identité et votre adresse

Visitez elections.ca pour connaître les pièces d'identité acceptées.

Apportez cette carte et vos pièces d'identité pour faciliter le vote.

To vote, you must:

- be a Canadian citizen
- be at least 18 years old on election day
- prove your identity and address

Visit elections.ca to know what ID is accepted.

Bring this card with you, along with ID, to make the voting process easier.

Nom ou adresse incorrects? Vérifiez votre inscription à elections.ca. / Incorrect name or address? Check your registration at elections.ca.

À l'électeur :
DOE, JOHN
123, RUE MAIN
ANYTOWN ON K1A5T7

To the Elector :
DOE, JOHN
123 MAIN STREET
ANYTOWN ON K1A5T7

elections.ca

Chazé yagihnâhe chas, doken chazé wîchayagarhokyte ze owabi îmkâhtahnikiyabi ne ûth owabi cha hiyunîkiyabiktach Owabinâ zen doki dohan chazé yagarukte ze onîgiyagaktach. Chaze wîchayagaroktahûn, dagurh nîduwe hâ oye ch owabinâ yaha chach.

Owabi cha oyaginîsî chas, ze'esîs doken îge ze hecedusî îga he chas, îhnûhân chazé wîchagarhobikte nen chazé yagihnâgesî chasî chas hecedusîrh nijihnâgabi cha hâktach. Dââ pathîptam. elections.ca website zen yabi hûnâ, châzé gihnâgabi hûnâ dokten yati ze owîchagiyam. Ze'esî chas **1-800-463-6868** zedusî chas **1-800-361-8935 (TTY)** zen thuda yekiyabi wîchakum. Onîgiyabi heceduktach. Chazé wîchayagarho na hân îs chazé yagihnâga hecedu chach.

Chase yaginâgaktachas nechan echânus îjenâch:

- Canadian henîcha sîjenâch
- chase garubi âba sechuhâ waniedu yawabi 18 ihâyakibicha
- chase owabinâ dokâ châîs, nâgu nîtiospaye owabinacha

Dokeken wîchagarhobikte ze

Dohadugas chazé wîchayagarho heceduc hûga kinâgebi hân.
Niye dukte nîgidââ ze îmagam wîchagarhobi ze.

1 Hûga kinâgebi âba zewîchuhâ

Dokten chazé wîchayagarhokte ze wahiâba ayotabi age nûm ehâga yuspabi hâktach

2 Gaîtogam chazé wîchagarhobi âba he chas îs yukâch

Dokten chazé wîchayagarhokte ze nîjikabi chach. Haken nâpchuwîk eya zehân zedâhâ rhteyedu nâpcuwîk eya ze îktûth yuspabi hâktach

3 Owabi imâkta hnikiyabi ze ûth

Hûgabi wîchagarhneyabi âba ze ehâikibisîrh, âba nûba ze chazé gihnâgam. Îchîktarh owabi cha en wîchayagarhokte ze hûga kinâge âba ze ehâikibisîrh oginîbi chiyaga yeyabi chach. Ze'esî chas yawabisîk chach. **elections.ca** website zen yabi hûnâ dagun onîgiyabi ze akidabi hûnâ owabi imâkta ahnibi ne ûth chazé wîchayagarhobikte ze nîgidââbi ha akidam.

4 Elections Canada Office cha Canada en duktedugas

Chazé wîchagarhobi ze dukâ cha îyanage chas Elections Canada Office cha en yam hûga kinâgebi âba ze ehâikibisîrh âba nûba ze wîchuhâ rhteyedu hân sakpe eyasîrh Hûga kinâgebinâktach eyabi cha, **elections.ca** website zen nabisî chas thuda yekiyabi îkum dokten Office cha kiyân hâ onîgiyabiktach.

Owabi cha nîkubi ze agichidam. Dohân, doki îs chazé wîchayagarhobikte ze owabinâ zen nîjihnâgabi chach.

Owabi imâkta ahnibi ûth chazé wîchayagarhoktach ehe zedâhâs ze ohnâ îje onîjikâkte chach.

Chase owabina owakta yanuhnuhachach nechen

Duweniye ze, nâgu dokten yati ze owîchayaginakte ze, yamnî giyach
Chazë wîchayagarhokte chas, Canadian henîchas îjenâch kohâ age sahnora thâm yahnis îjenâ ko chach.

Wazi (1)



Nîduwe ze owabinâ cha wazi akidewichayakiya chach

- borhborâgen yekiyabi owabin
- Dagu cha owabin Gichûthe Hûga nîkubi he chas wohânîkiyabi cha nâgu dokten yati ze îga hes

Ze'esî chas

Îjinum (2)



Nîduwe ze owabinâ gichûthe hûgabi yawabi cha nûm akide wîchakiya

Chase owabin wazista nâgu nîtiospaye seko akide îchayakiyachach

Necha:

- chase garhubi owabin nâgu sûnyati owabinâcha
- oga nîhne owabin îjamnâ yatûcha wîthpe wîchakiyebiti owabinâcha

Chase owabinâ nuhesîni? Onîskasiyasîktach!

Duweniye ze oyage ze eyagubi cha îs yukâch Wîja ayakidabinathichiye chas **elections.ca** website zen akidam

Ze'esî chas

Îjyamnî (3)



Nîduwa nîchase yanuhesîchas

Piyas chase yagaru echeduch nîduwe se nâgu nitiospaye se oyagiwachas dowarh îs yenîgiyecha chase garubi ti en pîchiyacha onijiyaga chaduch.

+



Se dowektagus chase owabin hno hesîjenach nâgo doki tiospaye owabin hnohesîjenach. Ne chase ti en pîchiyene wîchasta wazinîje ogiya chien ogijikâchach (dosna îchayuhebi ti en îgabicha).

Wîchagarhobi en onîgiyabiktach. Yako terhisî



Chazé wîchagarhobikte ze dokten yabikte ze nijikabi chach. Zen yam. Gaitogam chazé wîchayagarhobikte ze ko zen nabikte ze'ech. Hûga kinâgebinâktach eyabi zedâhâ, dokten chazé wîchayagarhokte ze nîgidââ bathîptam Terhis tin eyabi chiyaga hâ thnoyabinathichiye chas

- Owabi cha nîkubi zen akidam.
- **Elections.ca** website sen yabi hûnâ postal code ze Voter Information Service chowakî zen gihnâgam.
- Ze'esî chas thuda yekiyabi îkum **1-800-463-6868** zedusî chas **1-800-361-8935 (TTY)** zen

Ekta chazé wîchayaku nakte zen terhis ti ina chiyaga hâ yabathîptanâthichiye chas **1-800-463-6868** zen thuda yekiyabi îkum ze'esî chas **1-800-361-8935**.

Onîgiyabi chiyen yachîge chas, îtos îabi nechi, Elections Canada Office ze thuda yekiyabi wîchaku.

Ûth chazé wîchagarhobi onîgiyabi chiyaga yukâch



Ballot ze (hûga kinâgebi châzé îgabi ze) tâktâga cha yukâch duwe ahtagabi ze îs chazé ze tâktâga owîchagijiwabi heceduc.



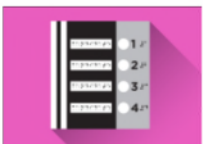
Îabi ùth onîgiyabi chiyaga nâgu nâpuge ùth îabi ne cha yukâbi chach eyas wîchanorabi chas.



Hûga kinâgebi ze chazébi ze tâktâga hnâgabi heceduc ze'esîktes garhubi cha ùth owabi heceduc yabutaktaga hûnâ ayaîa chiyaga.



Duwe wîchayagarhonâthichiye ze onîgiyabi hecedu chach. Duwe gici yahisî chas zen piîciyabi ze wazirh wîchayorham



Butabihâ aîabi ne cha yukâctach.



Ûth owabin sogé cha Niyenîtawa cha îs ahinubi heceduc ùth owabin



Thudazân dagun tâga îju garhabi ne cha ktûtha



Chazé gihnâgbi gichûthe owabin cha

Ne aîam: Butabi hâ aîabi ze hûga kinâgebi âba hân îje yukâktach Owabi tâktâga hnâgabi ne gaitoigam nâgu hûgabi wîchagarhobi âba hân ko yukâktach.